



DIAMONDZ
BY **DANUBE**

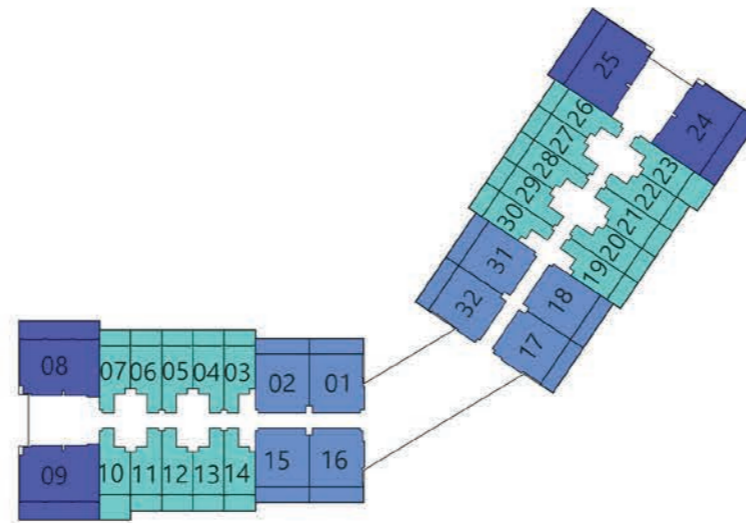
FLOOR PLANS

UPTOWN - JLT
DUBAI

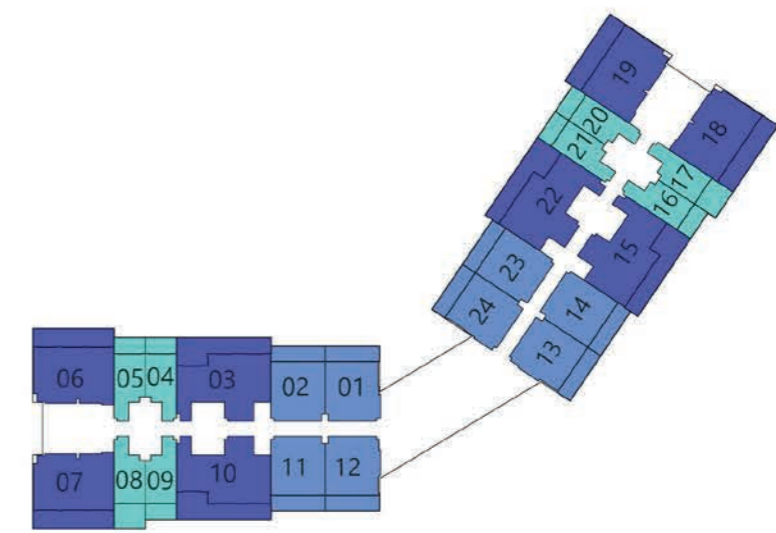
12TH FLOOR



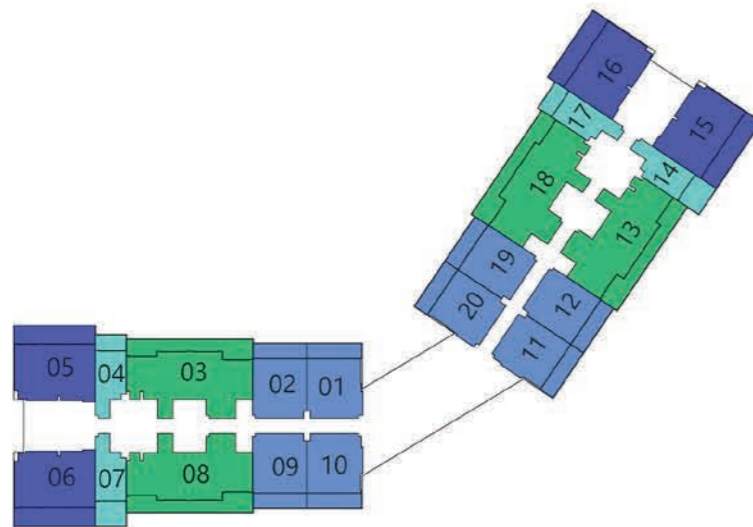
13TH - 31ST FLOOR



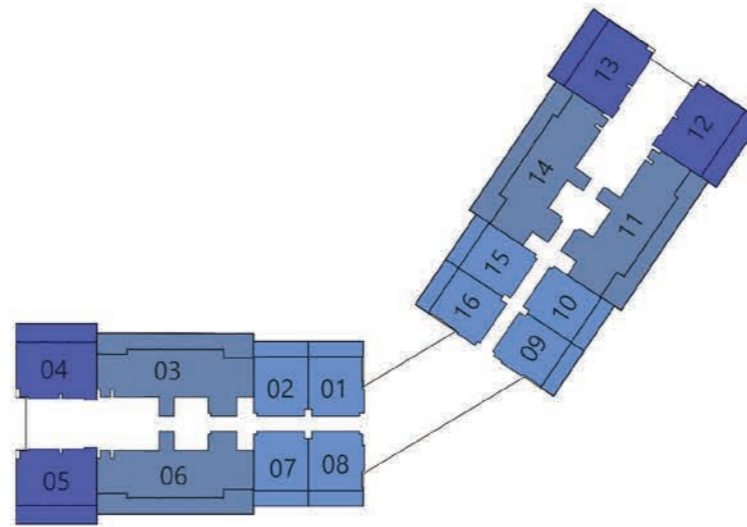
33RD - 42ND FLOOR



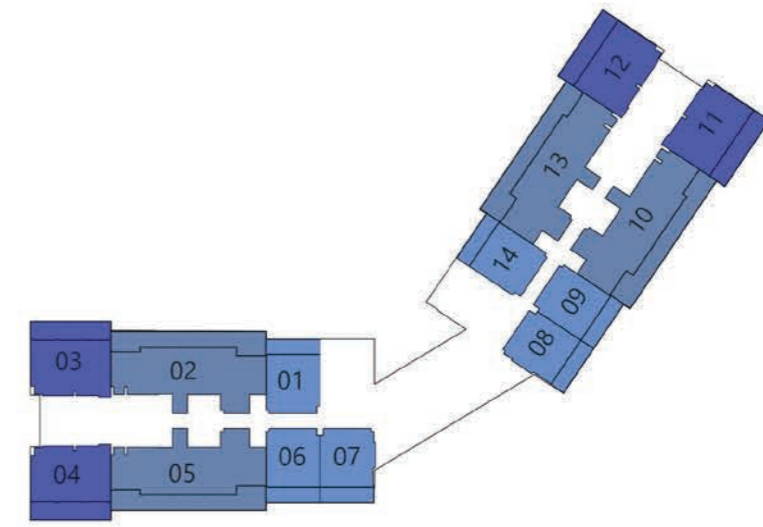
43RD - 55TH FLOOR



56TH - 59TH FLOOR



60TH FLOOR

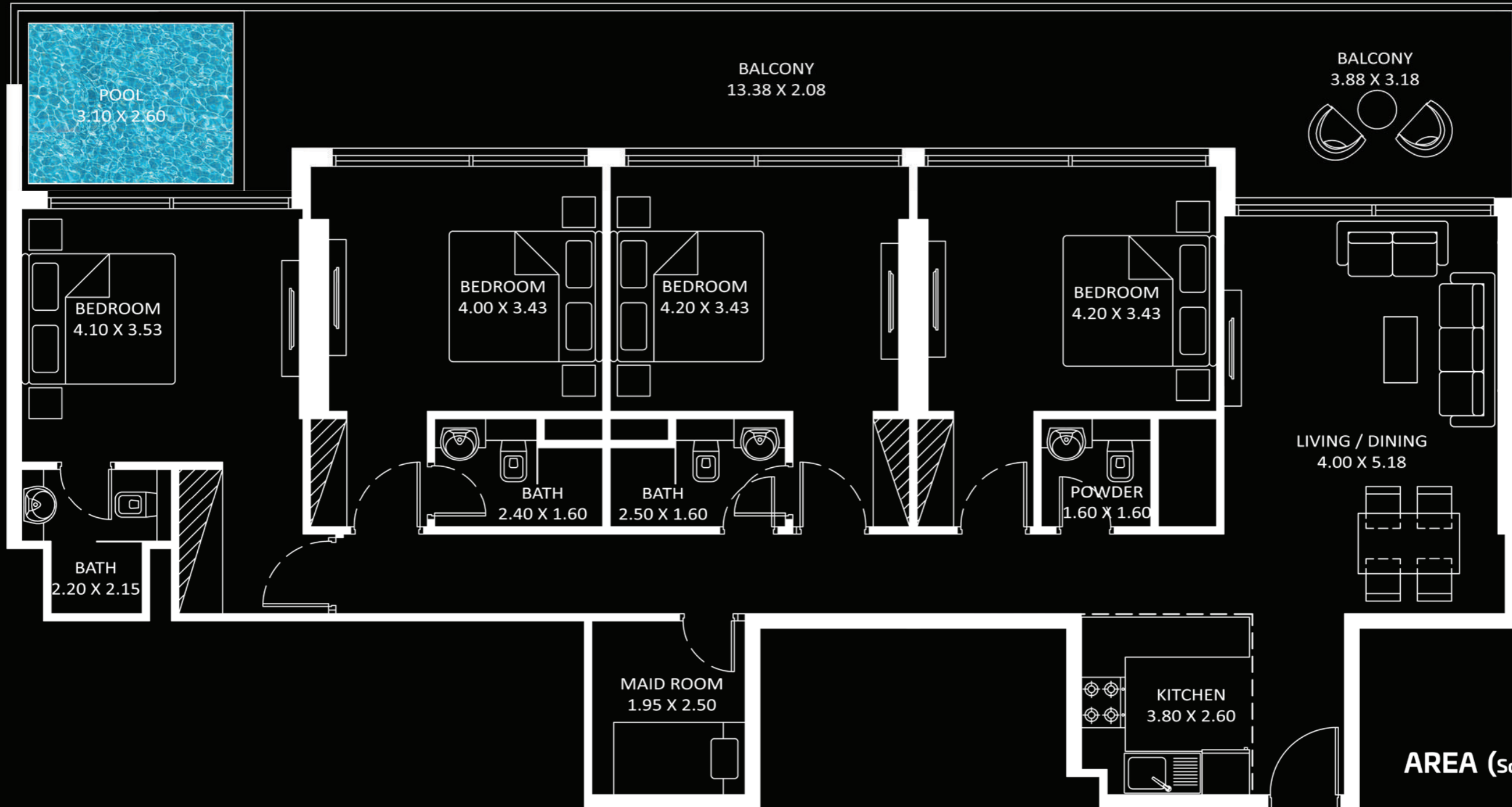


DIAMONDZ

- STUDIO**
- 1 BEDROOM**
- 2 BEDROOM**
- 3 BEDROOM**
- 4 BEDROOM**



4 BEDROOM



AREA (Sq.Ft)

Apartment
1,425 to 1,433

Balcony
534 to 539

Total
1,959 to 1,973

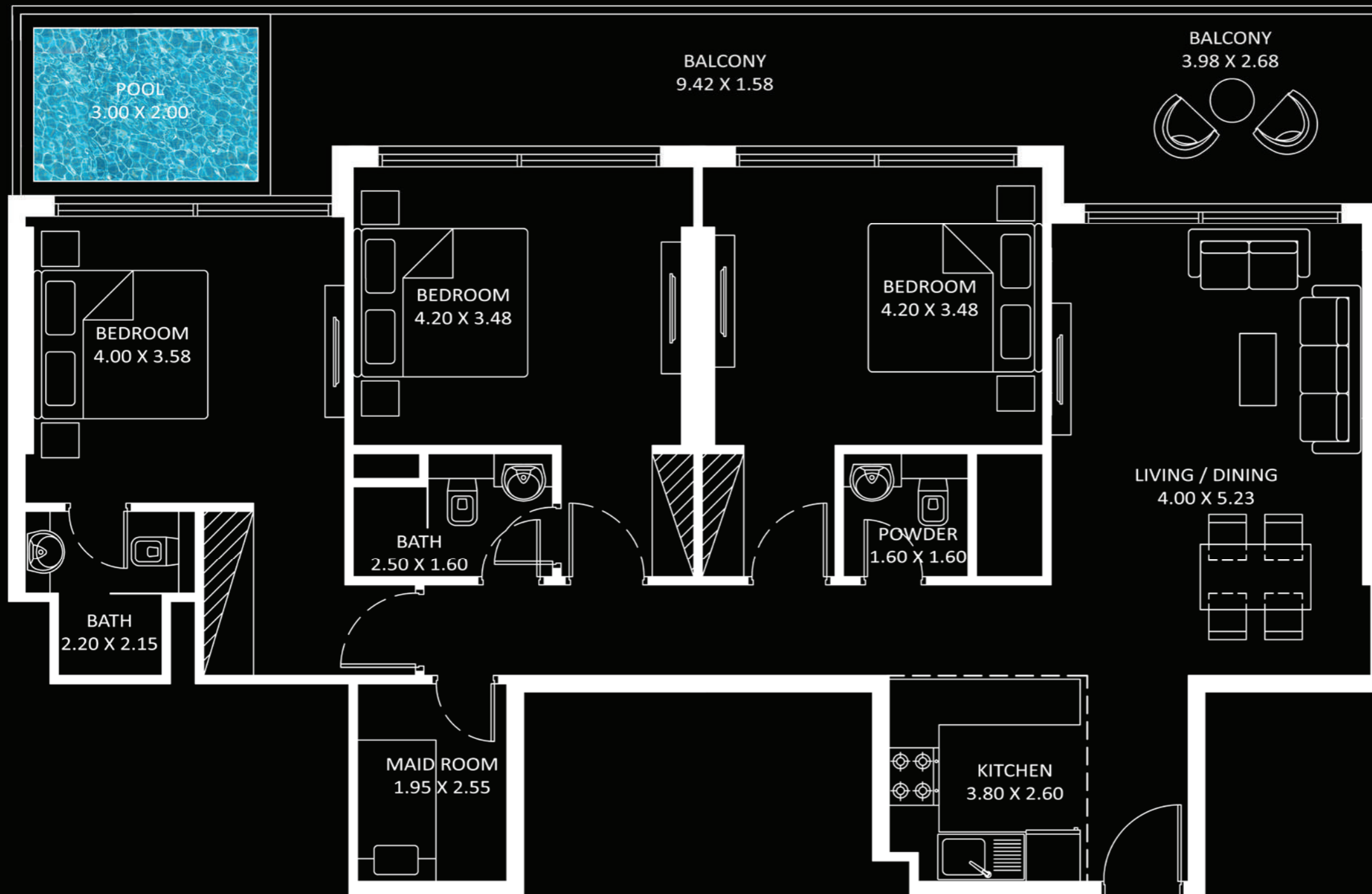
FEATURES :

- Pool
- Maid Room
- Convertible Kitchen

Diamondz



3 BEDROOM



AREA (Sq.Ft)

Apartment
1,153 to 1,161

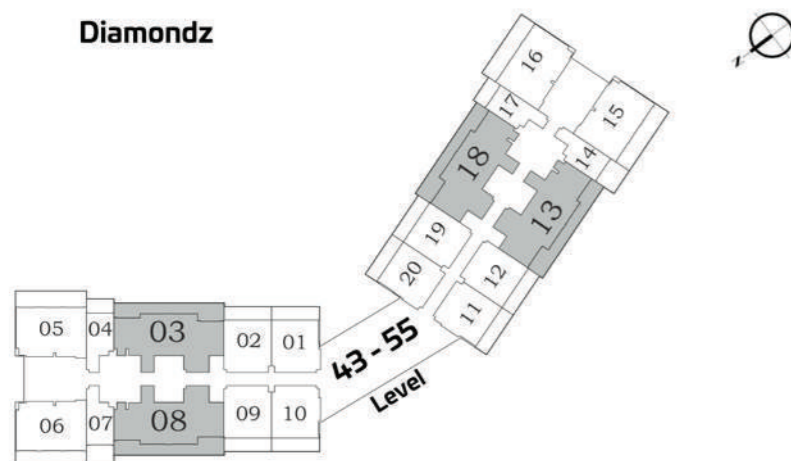
Balcony
354 to 358

Total
1,507 to 1,519

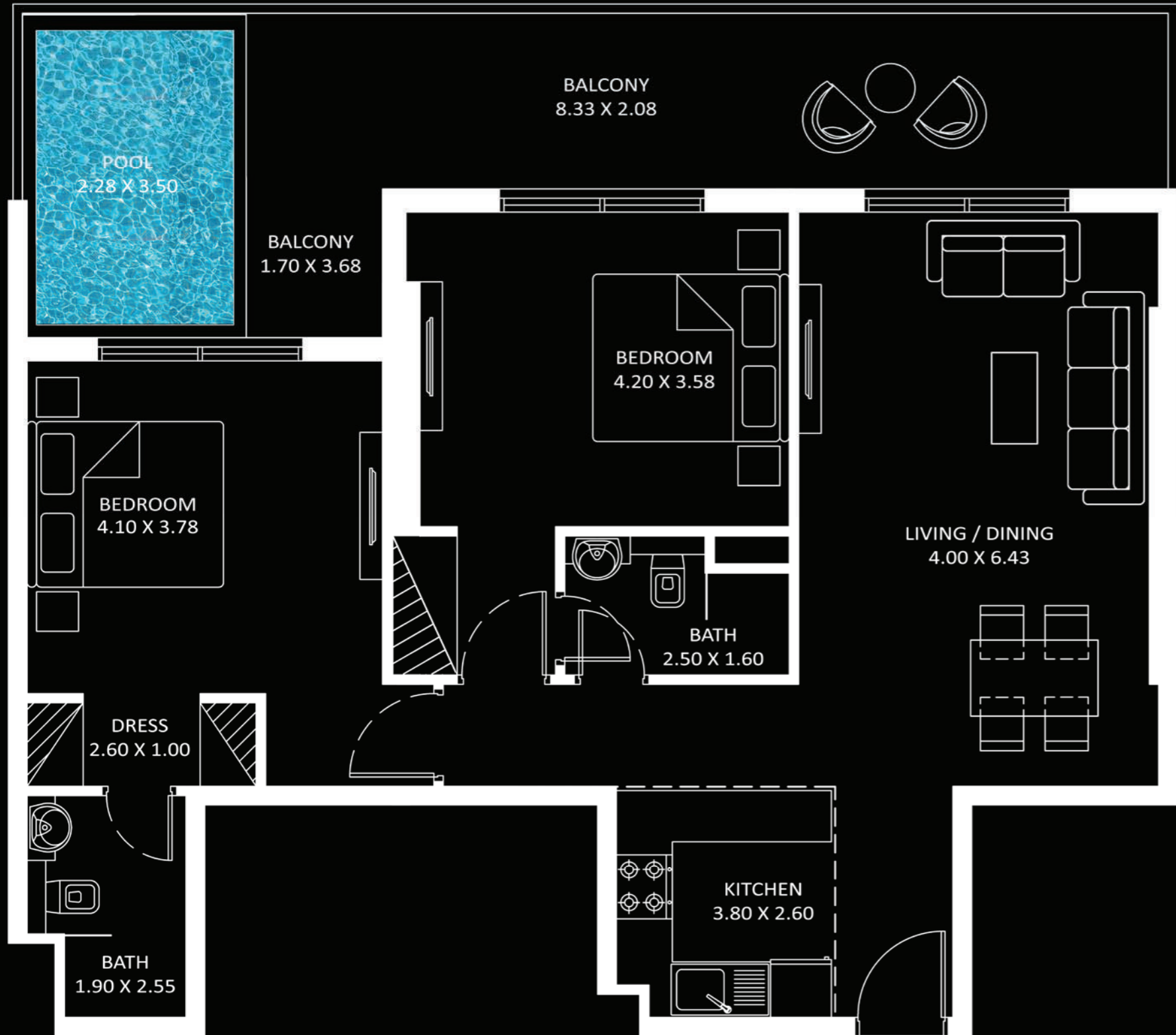
FEATURES :

- Pool
- Maid Room
- Convertible Kitchen

Diamondz



2 BEDROOM TYPE - B



AREA (Sq.Ft)

Apartment
912 to 921

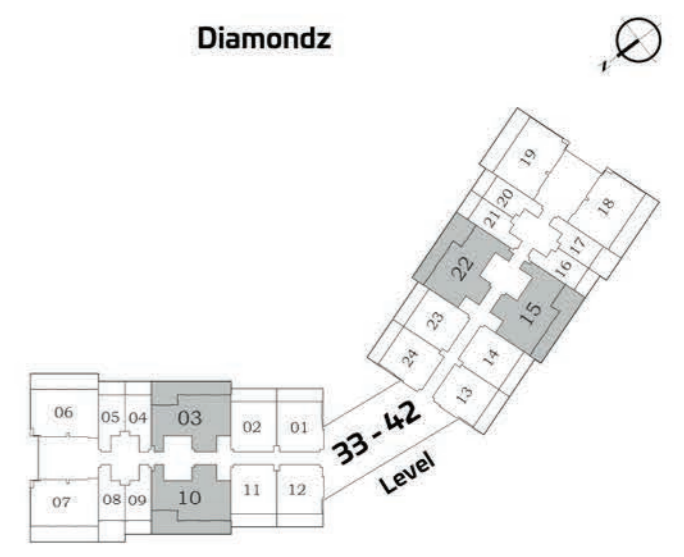
Balcony
345 to 349

Total
1,258 to 1,270

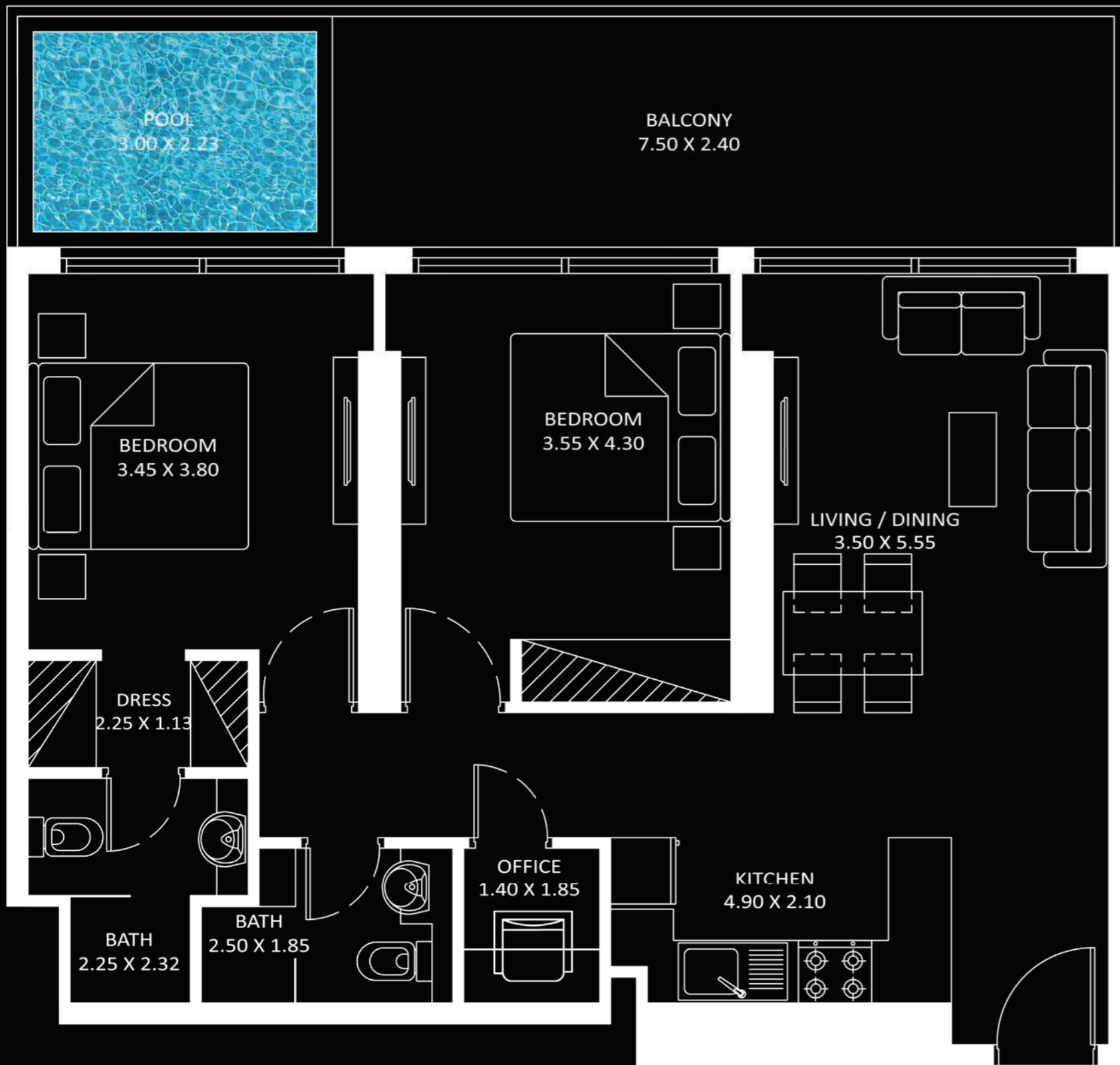
FEATURES :

- Pool
- Convertible Kitchen

Diamondz



2 BEDROOM TYPE - A



AREA (Sq.Ft)

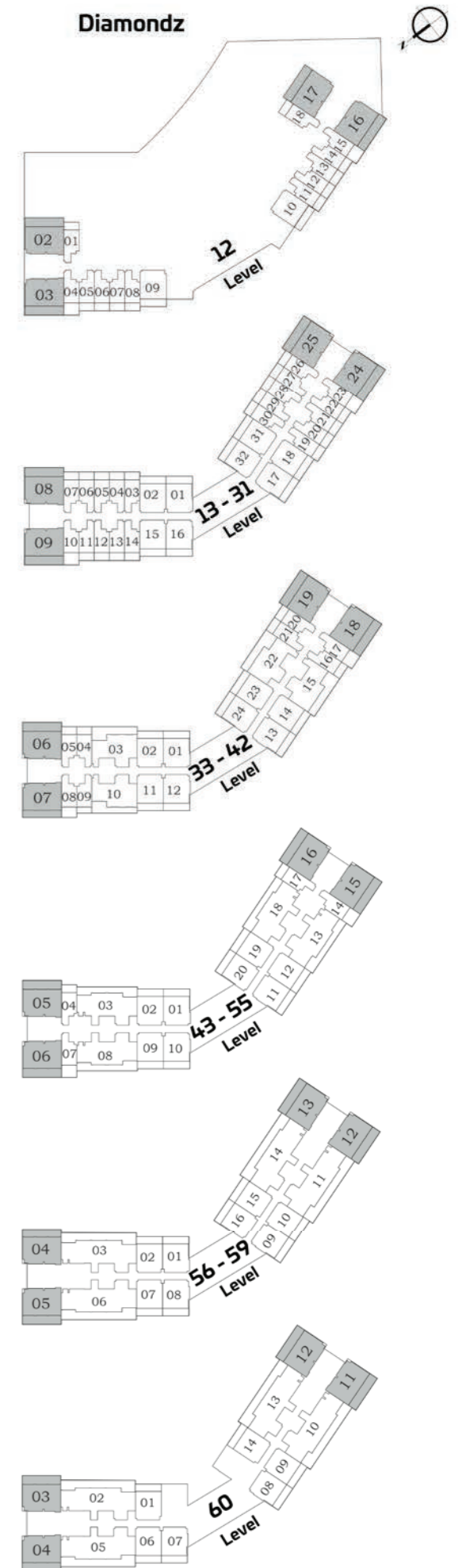
Apartment
822 to 830

Balcony
273 to 277

Total
1,095 to 1,107

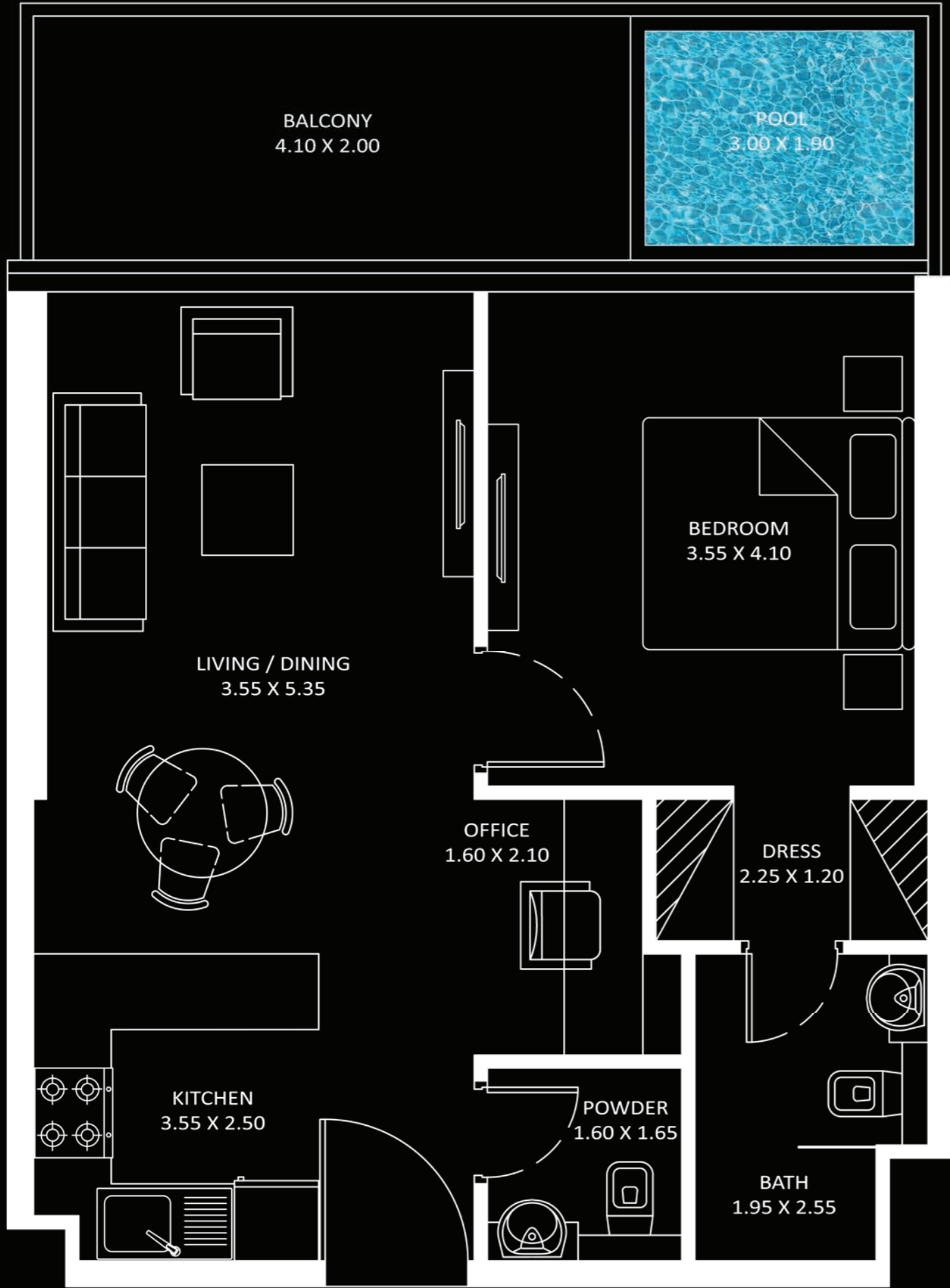
FEATURES :

- Pool
- Office



PRESIDENTIAL SUITE

Diamondz



AREA (Sq.Ft)

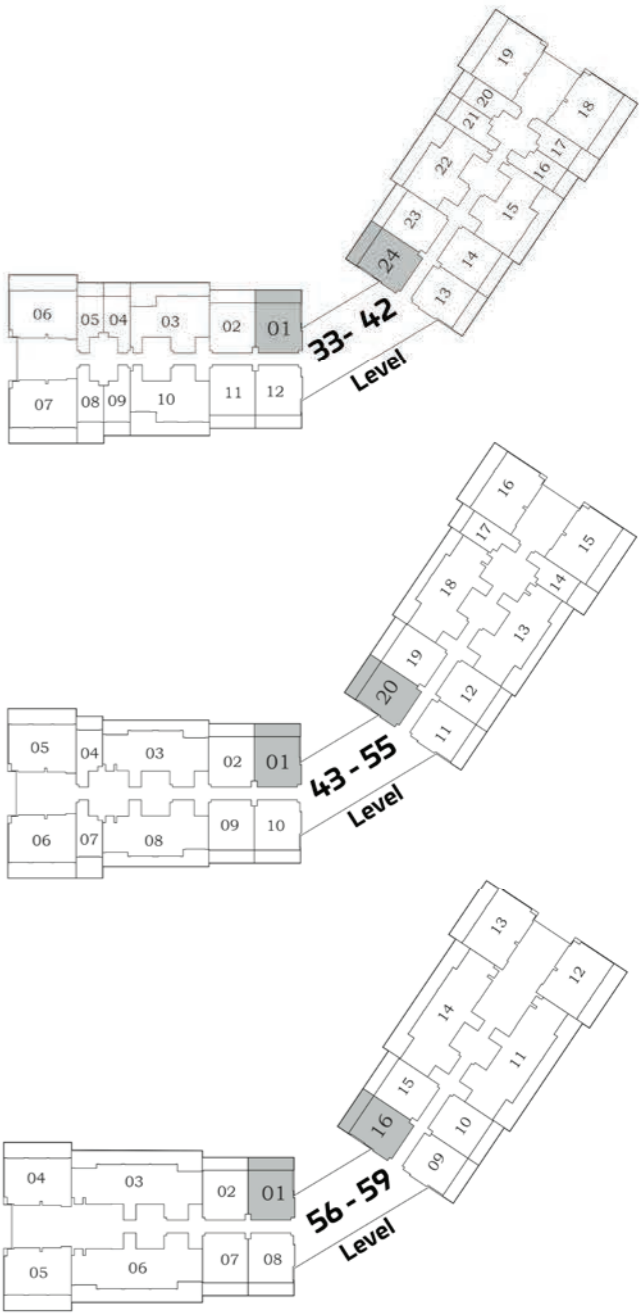
Apartment
589 to 597

Balcony
150 to 154

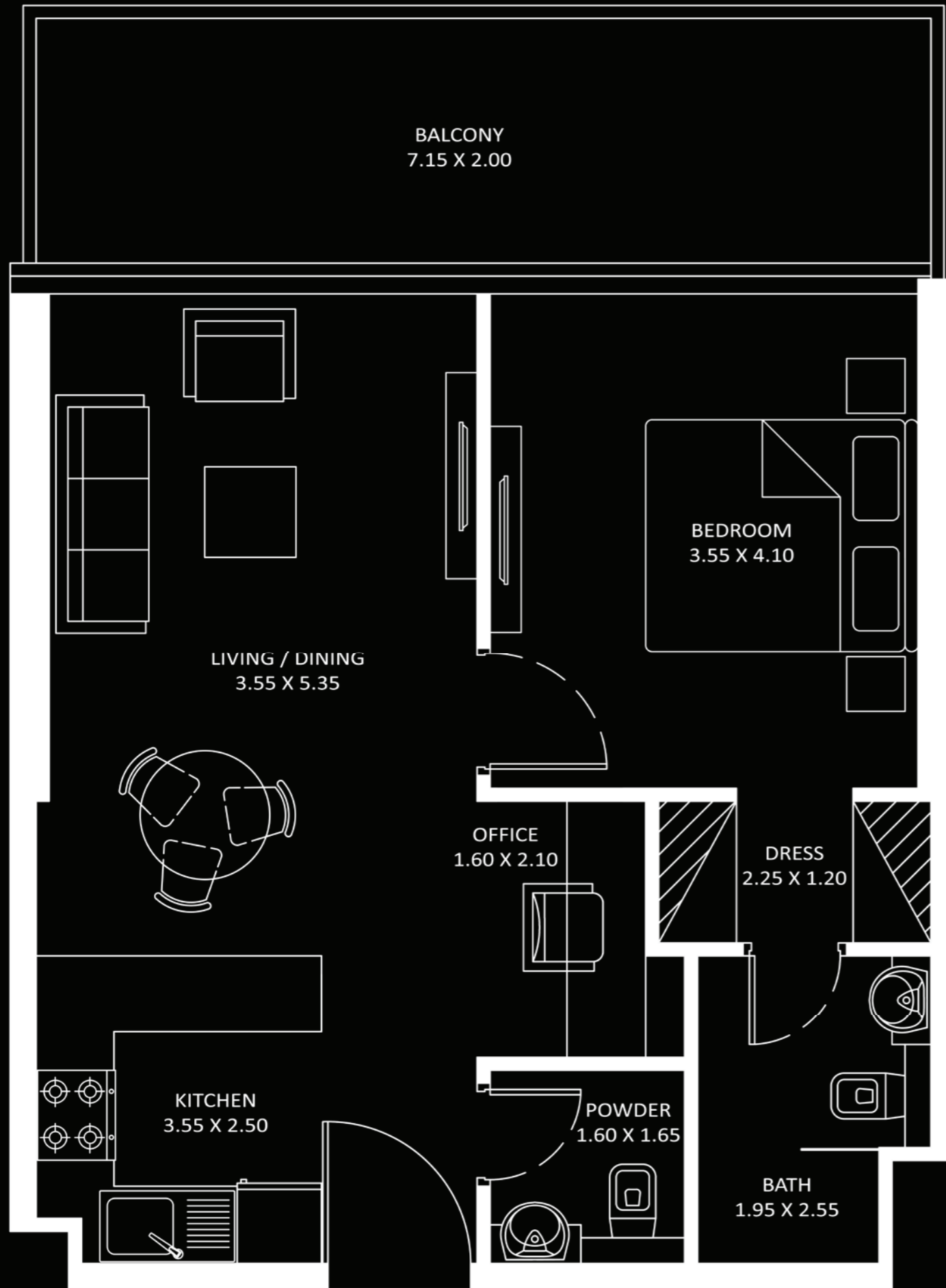
Total
739 to 751

FEATURES :

- Pool
- Office



1 BEDROOM



AREA (Sq.Ft)

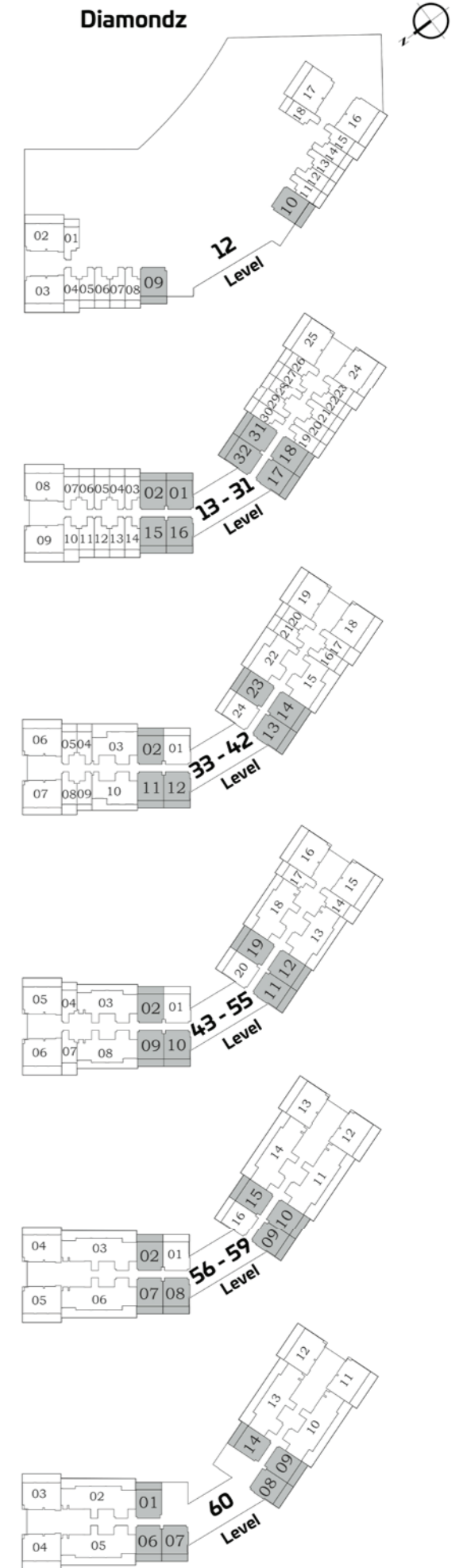
Apartment
585 to 599

Balcony
148 to 154

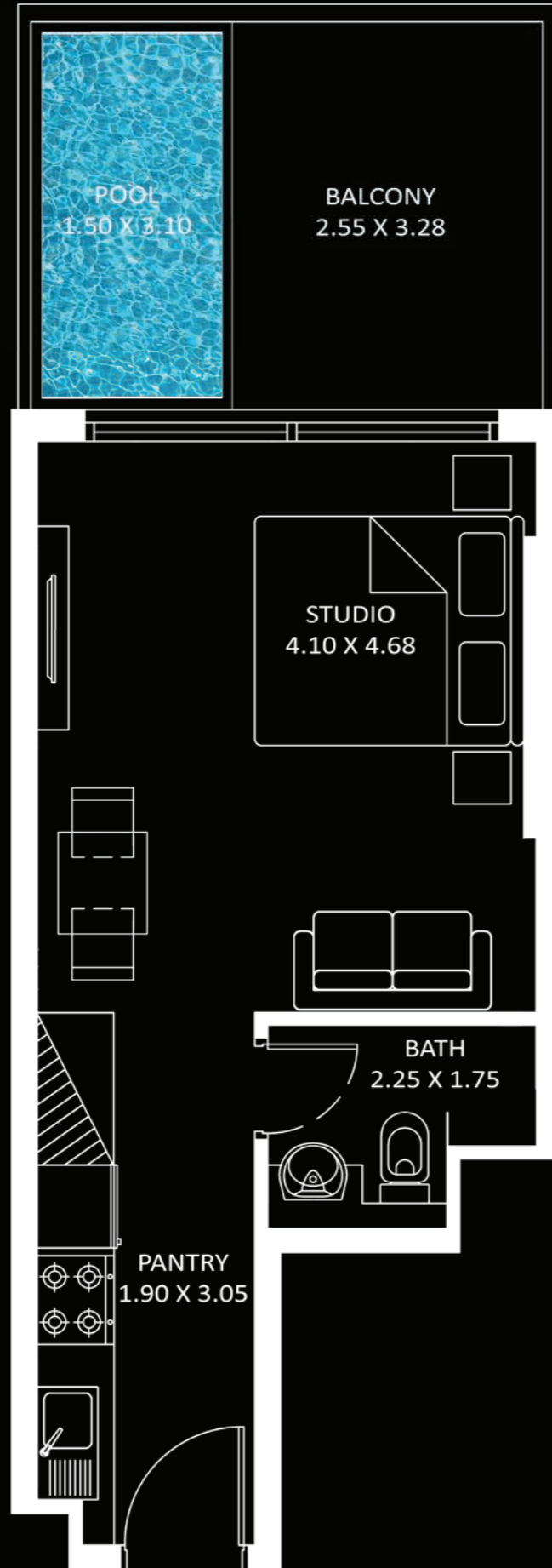
Total
733 to 753

FEATURES :

Office



PRESIDENTIAL STUDIO



AREA (Sq.Ft)

Apartment
318 to 326

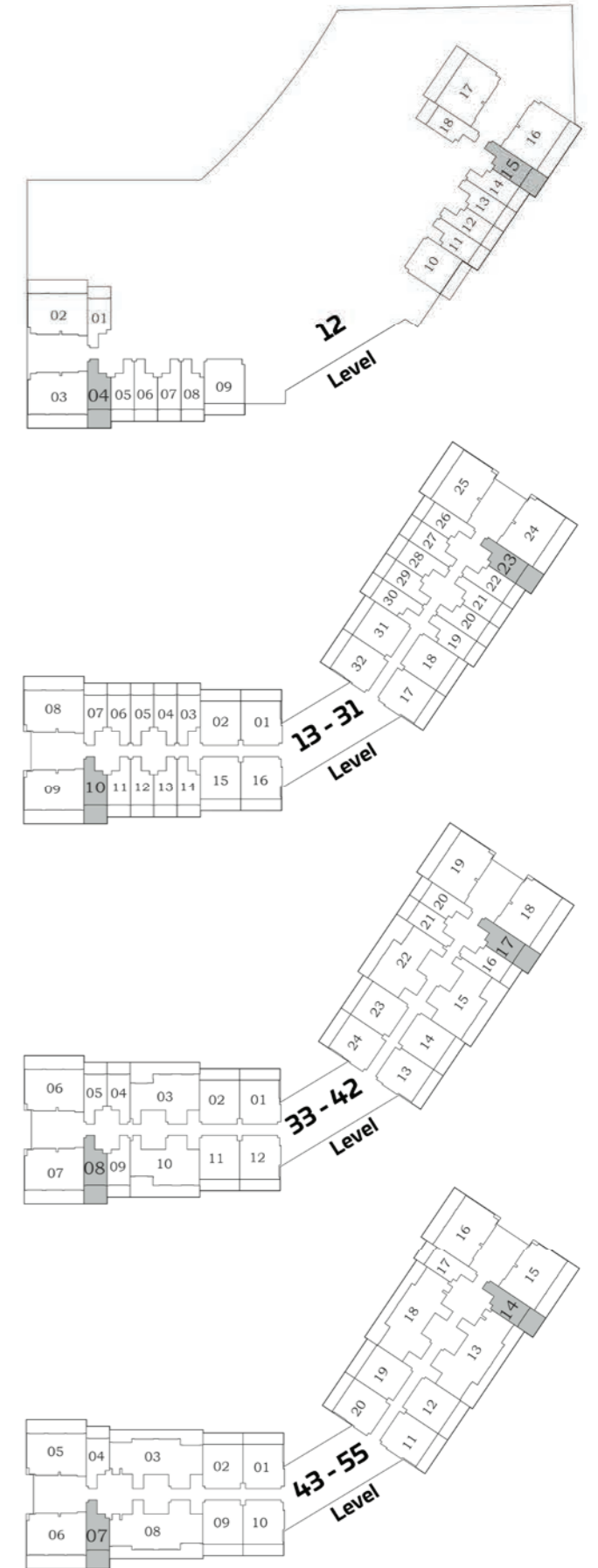
Balcony
142 to 146

Total
460 to 472

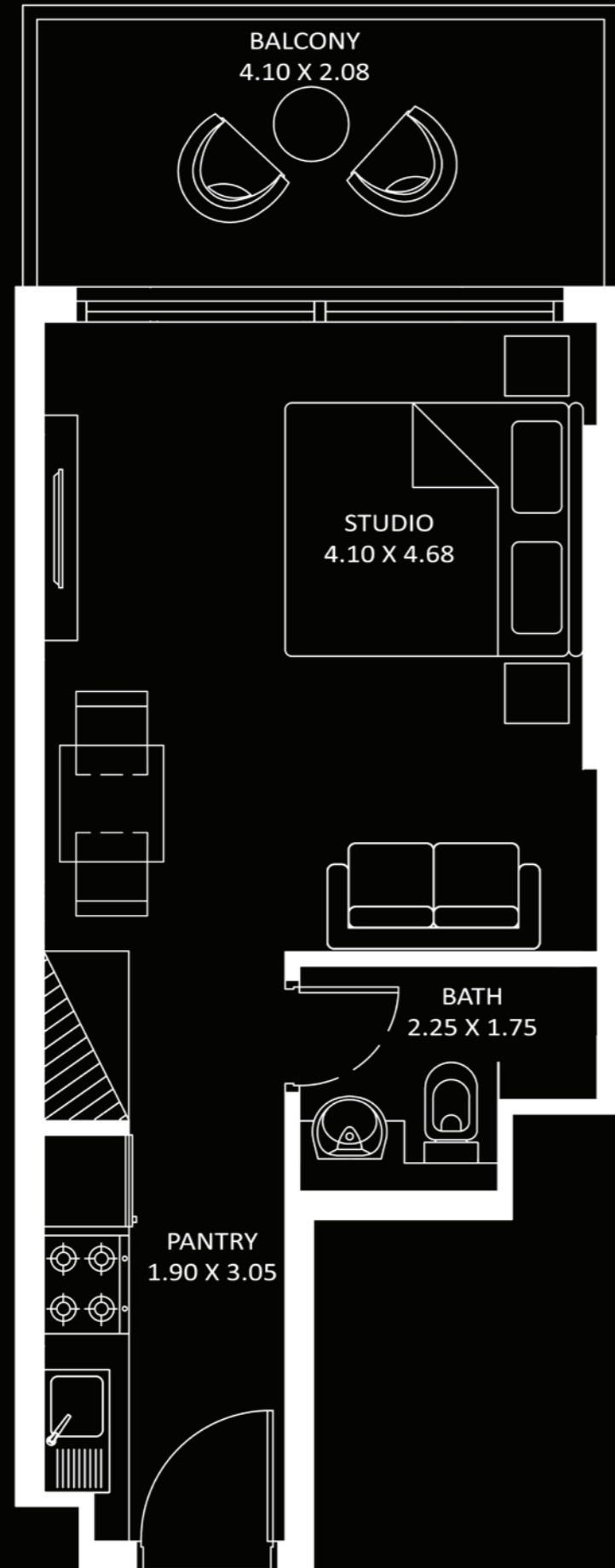
FEATURES :

Pool

Diamondz



STUDIO



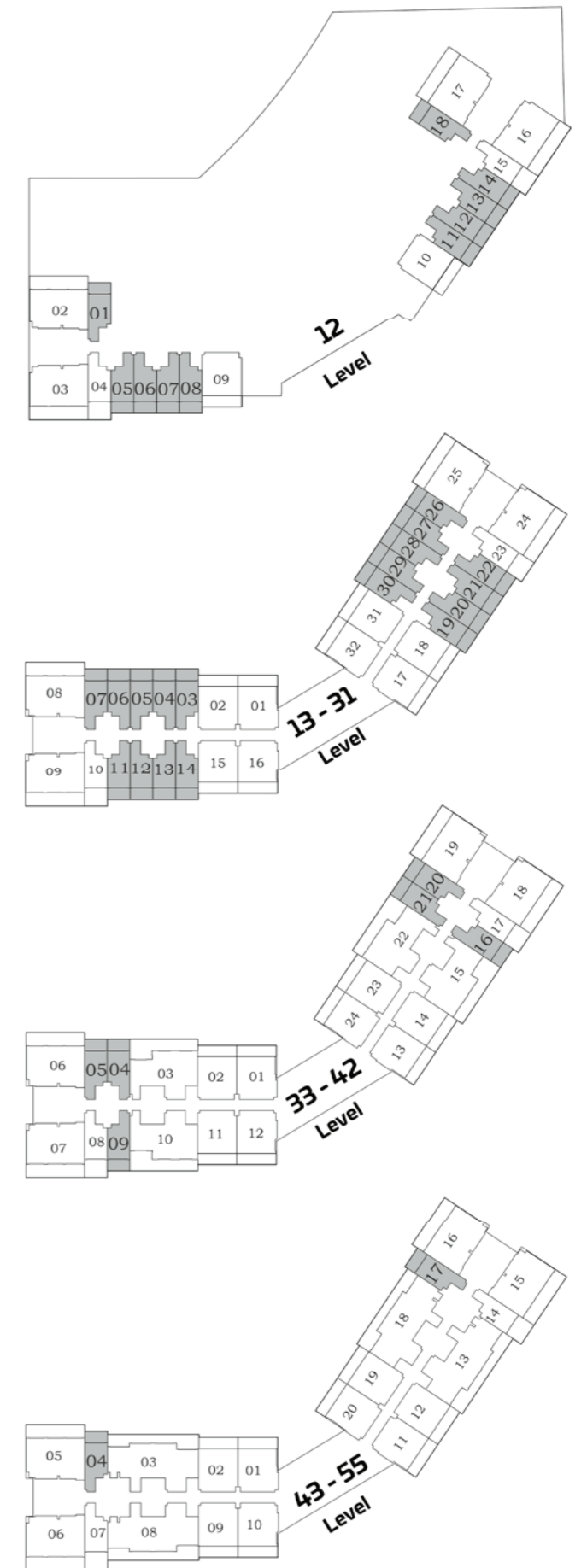
AREA (Sq.Ft)

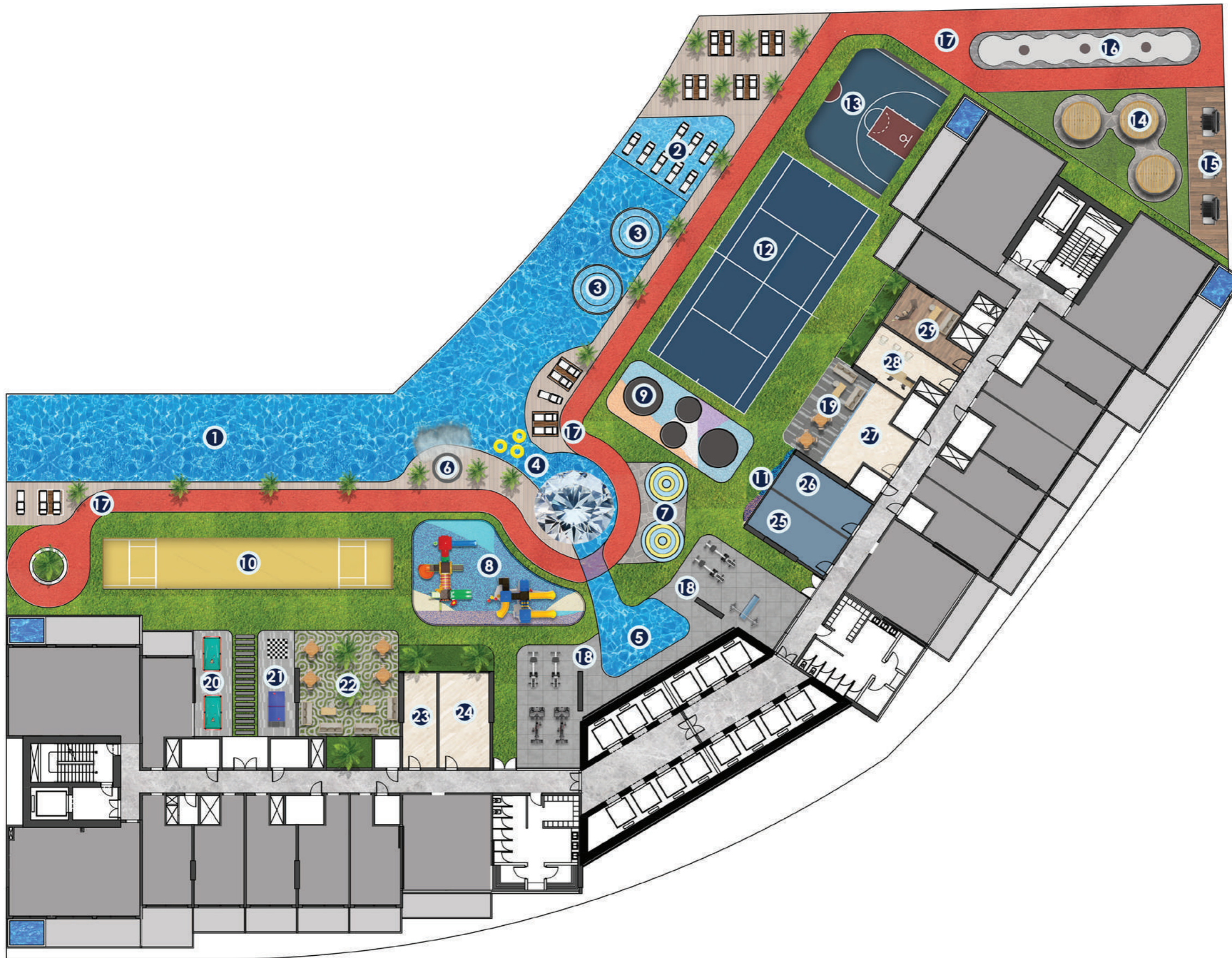
Apartment
318 to 326

Balcony
89 to 93

Total
407 to 419

Diamondz





1. INFINITY POOL
2. SHALLOW POOL
3. JACUZZI
4. KIDS POOL
5. AQUATIC GYM
6. WATER FALL
7. TODDLERS SPLASH PAD
8. KIDS PLAY AREA
9. TRAMPOLINE
10. CRICKET PITCH
11. WALL CLIMBING
12. PADDLE TENNIS /
BADMINTON COURT
13. BASKET BALL COURT
14. CABANA SEATING
15. BBQ AREA
16. SKATING PARK
17. JOGGING TRACK
18. OUTDOOR GYM
19. OUTDOOR LIBRARY
SEATING
20. SNOOKER ZONE
21. CHESS / TABLE TENNIS
22. FAMILY SEATING
23. DOCTOR'S ON CALL
24. KIDS DAYCARE
25. MALE PRAYER ROOM
26. FEMALE PRAYER ROOM
27. LIBRARY
28. BEAUTY SALON
29. BUSINESS CENTER

AMENITIES AT LEVEL -12





- 30. JACUZZI
- 31. RAIN SHOWER
- 32. OPEN CIGAR LOUNGE
- 33. OUTDOOR PARTY HALL
- 34. INDOOR PARTY HALL
- 35. SPA & THERAPY
- 36. MALE / FEMALE CHANGING ROOM
- 37. GYM
- 38. STUDIO FOR CONTENT CREATOR
- 39. OPEN AIR CINEMA



- 40. ZUMBA DANCING DECK
- 41. SKY OBSERVATORY DECK
- 42. HEALTH BAR



- 43. YOGA DECK
- 44. ROOF TOP HAMMOCK GARDEN
- 45. SKY GOLF
- 46. SKY GARDEN

AMENITIES AT ROOF LEVEL



1. All information, materials, plans and amenities are approximate and provided for illustrative purposes only. The developer reserves the right to make revisions to the floor plans and any features, materials, dimensions, drawings, and amenities of the project without notice.
 2. Units areas, actual dimensions, layout, location, specifications of balcony, door, wardrobe or other fixtures may vary floor to floor and between units and are subject to revision by the developer.
 3. Furniture and electric devices will not be provided by the developer, unless specified otherwise in the Unit Sale Purchase Agreement.



The JEWEL *of* JLT

As the architectural gem of Uptown,
situated in Jumeirah Lake Towers,
Dubai, DIAMONDZ is the crafted jewel
of homeowners and investors.

DANUBE **PROPERTIES**



Dubai | Abu Dhabi | Muscat | Riyadh | Bahrain | London | China
Mumbai | New Delhi | Ahmedabad | Kochi | Hyderabad

+971 800 57 57

danubeproperties.com

info@danubeproperties.ae